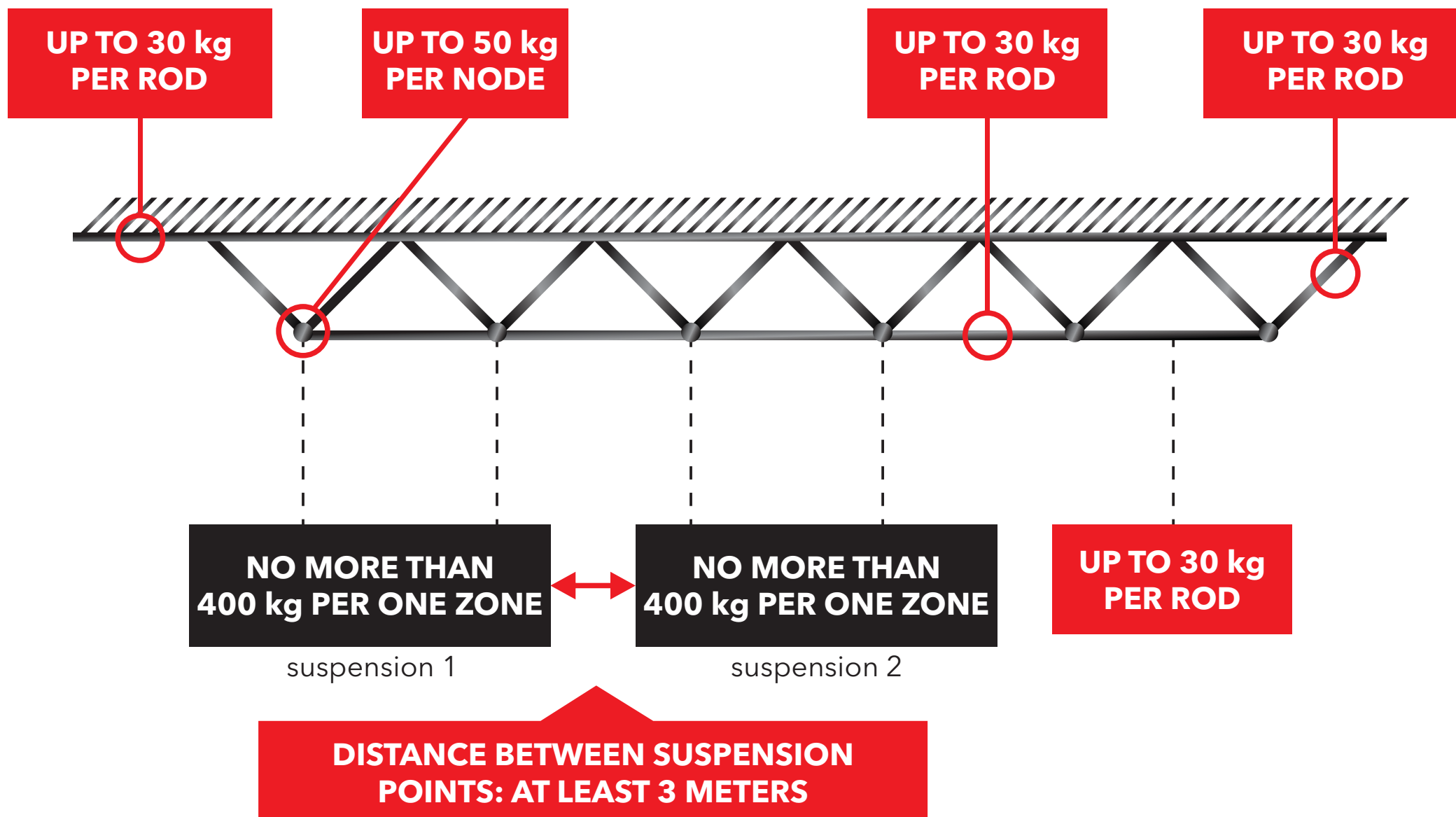


Scheme No. 1

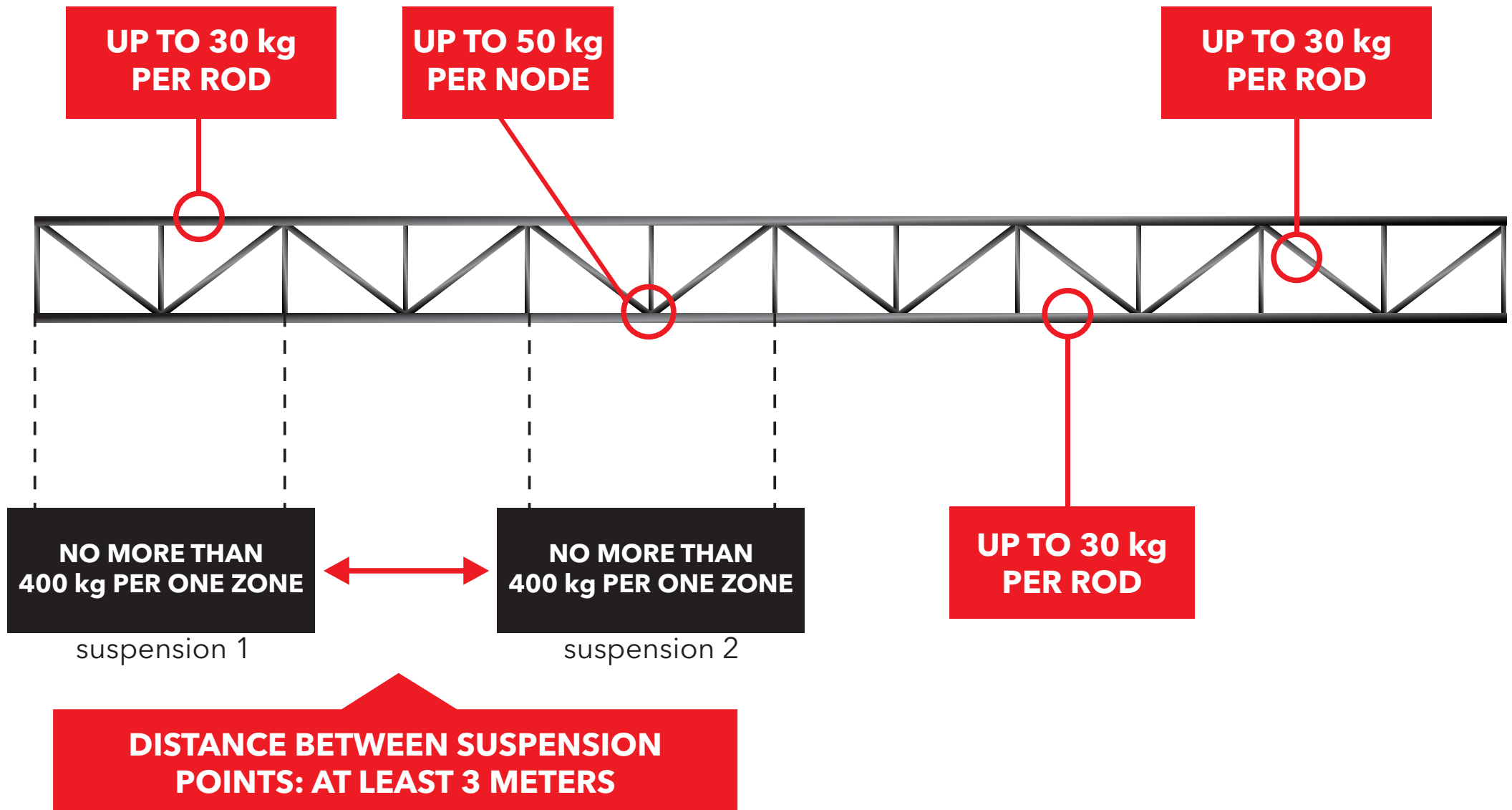
Suspension layout scheme in exhibition halls N°10/11



*In the winter period, the total weight of the suspended structure must be reduced by 30%.

Scheme No. 2

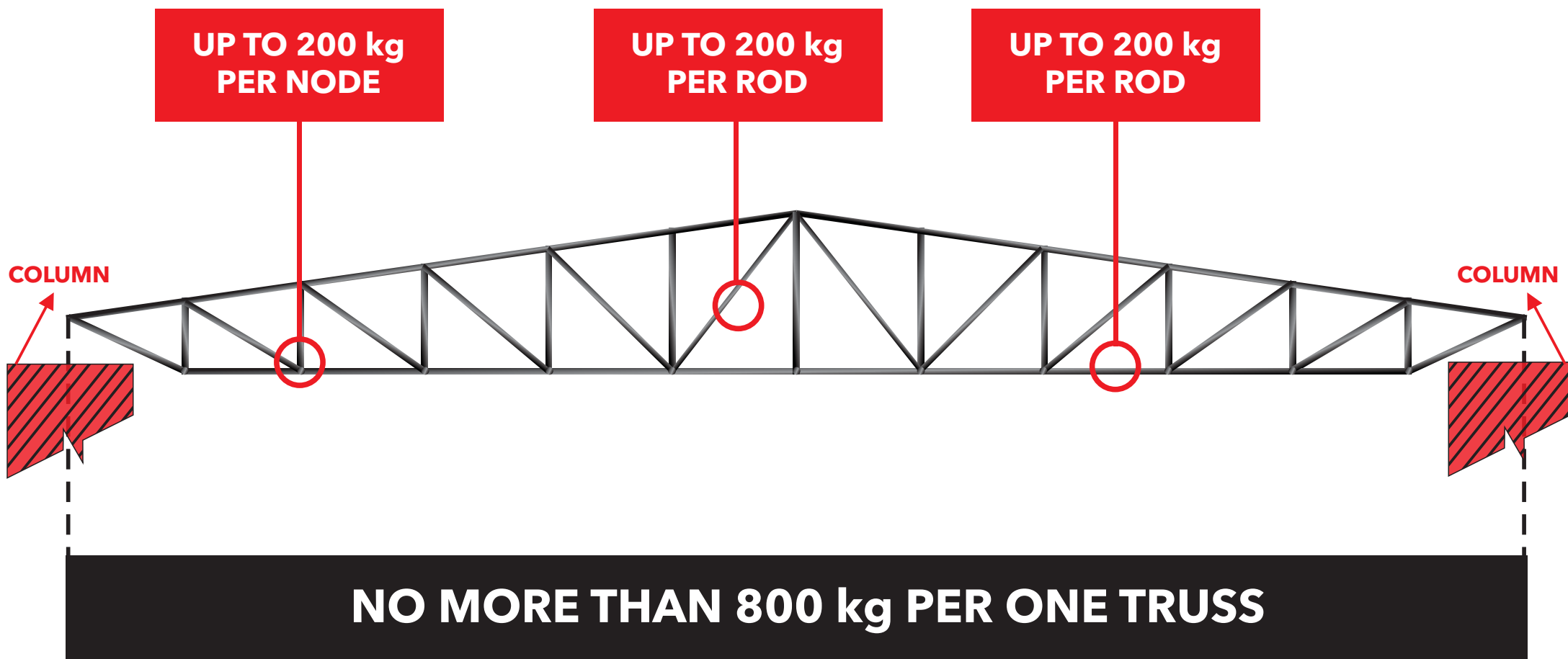
Suspension layout scheme in exhibition halls N°9



*In the winter period, the total weight of the suspended structure must be reduced by 30%.

Scheme No. 3

Suspension layout scheme in exhibition halls N°7/8



*In the winter period, the total weight of the suspended structure must be reduced by 30%.